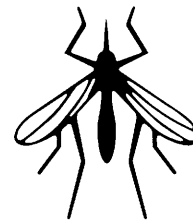


# Altosid® Pellets

## MOSQUITO GROWTH REGULATOR



A GRANULAR PRODUCT TO PREVENT ADULT MOSQUITO EMERGENCE

### SPECIMEN LABEL

**ACTIVE INGREDIENT:**

(S)-Methoprene (CAS #65733-16-6) . . . . . 4.25%

**OTHER INGREDIENTS:** . . . . . 95.75%

Total . . . . . 100.00%

EPA Reg No. 2724-448

KEEP OUT OF REACH OF CHILDREN  
**CAUTION**

**PRECAUTIONARY STATEMENTS**

**HAZARDS TO HUMANS  
AND DOMESTIC ANIMALS**

**CAUTION**

**ENVIRONMENTAL HAZARDS**

This product is toxic to aquatic dipteran (mosquitoes) and chironomid (midge) larvae. Using it in a manner other than that described by the label could result in harm to aquatic dipteran. Do not contaminate water when disposing of rinsate or equipment washwaters.

**DIRECTIONS FOR USE**

It is a violation of Federal Law to use this product in a manner inconsistent with its labeling.

**INTRODUCTION**

ALTOSID® Pellets release ALTOSID® Insect Growth Regulator as they erode. The pellets prevent the emergence of adult standing water mosquitoes, including *Anopheles*, *Culex*, *Culiseta*, *Coquillettidia*, and *Mansonia* spp., as well as adults of the floodwater mosquitoes, such as *Aedes* and *Psorophora* spp. from treated sites.

**GENERAL DIRECTIONS**

ALTOSID Pellets release effective levels of ALTOSID Insect Growth Regulator for up to 30 days under typical environmental conditions. Treatment should be continued through the last brood of the season. Treated larvae continue to develop normally to the pupal stage where they die. **NOTE:** This insect growth regulator has no effect on mosquitoes which have reached the pupal or adult stage prior to treatment.

**APPLICATION SITES AND RATES**

MOSQUITO HABITAT	RATES (Lb/Acre)
<b>Floodwater sites</b> Pastures, meadows, ricefields, freshwater swamps and marshes, salt and tidal marshes, cattail marshes, woodland pools, floodplains, tires, other artificial water-holding containers	2.5-5.0
Dredging spoil sites, waste treatment and settling ponds, ditches and other manmade depressions	5.0-10.0
<b>Permanent water sites</b> Ornamental ponds and fountains, fish ponds, cattail marshes, water hyacinth beds, flooded crypts, transformer vaults, abandoned swimming pools, construction and other manmade depressions, treeholes, other artificial water-holding containers	2.5-5.0
Storm drains, catch basins, roadside ditches, cesspools, septic tanks, waste settling ponds, vegetation-choked phosphate pits	5.0-10.0

## APPLICATION SITES AND RATES (CONT.)

Use lower rates when water is shallow, vegetation and/or pollution are minimal, and mosquito populations are low. Use higher rates when water is deep (>2 ft), vegetation and/or pollution are high, and mosquito populations are high.

## APPLICATION METHODS

Apply ALTOSID Pellets up to 15 days prior to flooding, or at any stage of larval development after flooding, or in permanent water sites. Fixed wing aircraft or helicopters equipped with granular spreaders capable of applying rates from 2.5 to 10.0 lb/acre may be used to apply ALTOSID Pellets. The pellets may also be applied using ground equipment which will achieve good even coverage at the above rates. ALTOSID Pellets may be applied to artificial containers, such as tires and catch basins, etc.

## STORAGE AND DISPOSAL

Do not contaminate water, food, or feed by storage or disposal.

### STORAGE

Store closed containers of ALTOSID Pellets in a cool dry place.

### PESTICIDE DISPOSAL

Wastes resulting from the use of this product may be disposed of on site or at an approved waste disposal facility.

### CONTAINER DISPOSAL

Triple rinse (or equivalent). Then offer for recycling or reconditioning, or puncture and dispose of in a sanitary landfill, or if allowed by state and local authorities, by burning. If burned, stay out of smoke.

## WARRANTY AND CONDITIONS OF SALE

Seller makes no warranty, express or implied, concerning the use and handling of this product other than indicated on the label. Buyer assumes all risks of use and handling of this material when such use and handling are contrary to label instructions.

Always read the label before using this product.

For information call 1-800-248-7763 or visit our web site: [www.altosid.com](http://www.altosid.com).



Wellmark International  
Bensenville, Illinois U.S.A.



Zoecon®, A Wellmark International Brand  
ALTOSID® Pellets, ALTOSID® Insect Growth Regulator and ZOECON® are  
registered trademarks of Wellmark International.

©1999 WELLMARK

November 1999  
Bensenville, IL