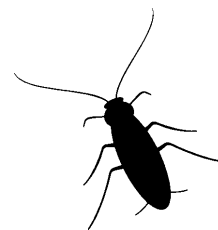


Gentrol™

IGR CONCENTRATE
with GENCOR® Insect Growth Regulator



CONTROLS ROACH & STORED PRODUCTS PEST POPULATIONS.
CONTINUOUS PROTECTION FOR 4 MONTHS.
LABELED FOR USE IN FOOD AREAS OF FOOD HANDLING ESTABLISHMENTS.
LABELED FOR FOGGING IN FOOD HANDLING ESTABLISHMENTS.

SPECIMEN LABEL

ACTIVE INGREDIENT:

(S)-Hydroprene [Ethyl(2E,4b,7S)-3,7,11-trimethyl-2,4,-dodecadienoate].	9.0%
INERT INGREDIENTS*:	91.0%
Total	100.0%

* Contains petroleum distillates

EPA Reg No. 2724-351-50809

KEEP OUT OF REACH OF CHILDREN
WARNING
SEE ADDITIONAL PRECAUTIONARY STATEMENTS

PRECAUTIONARY STATEMENTS HAZARDS TO HUMANS AND DOMESTIC ANIMALS

WARNING

Avoid contact with eyes, skin, or clothing. Causes skin irritation. Harmful if swallowed. Wash thoroughly with soap and water after handling.

STATEMENT OF PRACTICAL TREATMENT

IF SWALLOWED

Do not induce vomiting. Drink promptly a large quantity of milk, egg whites, gelatin solution, or if these are not available drink large quantities of water. Avoid alcohol. Call a physician or Poison Control Center immediately.

IF ON SKIN

Wash thoroughly with soap and water. Get medical attention. Remove contaminated clothing and wash before reuse.

IF IN EYES

Flush with plenty of water. If irritation persists, call a physician.

IF INHALED

Remove to fresh air.

NOTE TO PHYSICIAN

Contains petroleum distillate. Vomiting may cause aspiration pneumonia.

PHYSICAL AND CHEMICAL HAZARDS

Do not use this product in or on electrical portion of equipment due to the possibility of shock hazard.

DIRECTIONS FOR USE

It is a violation of Federal Law to use this product in a manner inconsistent with its labeling.

GENERAL INFORMATION

GENCOR®, an Insect Growth Regulator (IGR), is a synthetic, juvenile hormone “look-alike” which disrupts the normal growth development of cockroaches and stored product pests (examples of these pests include Indian meal moths, rice moths, tobacco moths, red flour beetles, confused flour beetles, lesser grain borers, merchant grain beetles, sawtooth grain beetles, warehouse beetles, cigarette beetles and dermestid beetles). Roaches, exposed to the GENCOR IGR will become adult incapable of reproducing.

GENCOR also disrupts the normal life cycle of stored product pests and fleas; thus, killing these insects. In both cases, the cycle of an infestation ends. GENTROL® IGR Concentrate is intended for use in apartment buildings, bakeries, bottling facilities, breweries, boiler rooms, cafeterias, candy plants, grocery stores, day care centers, hospitals, residential homes, office buildings, kitchens, laboratories, cereal processing facilities, manufacturing plants, mausoleums, meat and produce canneries, nursing homes, restaurants, schools, locker rooms, stores, taverns, warehouses, as well as various modes of transportation such as aircraft, buses, trucks, trailers, railcars, and marine vessels. GENTROL IGR Concentrate is intended for use as a general surface spray, fogging, spot and crack & crevice applications.

Prior to using in commercial or residential (household) food areas, please refer to the Food Handling Establishment Applications section of the label. The preparations prior to treatment and the clean up after application described therein are also to be followed for residential (household) use.

INSTRUCTIONS FOR USE

GENTROL IGR Concentrate is intended to be mixed with water and applied with spray or hand application equipment, such as hand pressurized or power operated sprayers capable of delivering general surface, fogging (space spray/mist), spot, crack and crevice spray applications, or with a paint brush, roller or similar device.

DILUTION PREPARATION FOR SURFACE SPRAY/PAINT BRUSH, SPOT AND CRACK & CREVICE PREPARATIONS

Use 1 ounce of GENTROL IGR Concentrate to one gallon of water. Partially fill the mixing container with water, add GENTROL IGR Concentrate, shake or stir, and fill to final volume. Use diluted solution within 48 hours of mixing. Shake or stir before each use.

FOR FOGGING PREPARATION

Follow equipment manufacturer's instructions,

TANK MIXING

The user, at his discretion, can tank mix GENTROL IGR Concentrate with an adulticide currently registered for use, unless the product label prohibits such use. The resulting tank mixture must be used in accordance with the more restrictive label limitations and precautions.

GENERAL SURFACE APPLICATION

Apply the GENTROL IGR Concentrate dilution at a rate of one gallon per 1500 sq ft of surface area. Use spray/application equipment capable of delivering a variable spray or coating to uniformly apply the solution. Applications can be made to areas such as walls, floors, ceilings, attics, basements, or crawls spaces. NOTE: Prior to treating around air ducts, shut off ventilation system. Allow treatment to dry prior to turning on ventilation system.

FOGGING (SPACE SPRAY/MIST APPLICATION)

Apply GENTROL IGR Concentrate as a fog or an ultra-low volume (ULV) mist with equipment such as ULV, mechanical misting sprayers, aerosol generators, or thermal foggers to achieve uniform coverage. Follow manufacturer's solution preparation instructions. Apply at a rate of one ounce (one gallon dilution) per 12,000 cu ft. Fogging applications are recommended for larger facilities including warehouses (Refer to WAREHOUSES section below). Close room or warehouse and shut off all ventilation systems. Apply the product in the air, and direct mist toward all areas that may harbor target pests. After treatment, leave the room closed for 30 minutes or longer as recommended by the equipment manufacturer or the labels of other products applied in tank mixing. Do not remain in treated area; ventilate before reentry.

SPOT AND CRACK AND CREVICE APPLICATIONS

Apply GENTROL IGR Concentrate diluted spray solution using either a pressurized spray system capable of delivering a pin-point or variable spray pattern or a device capable of coating evenly. Crack and crevice applications may be made directly to areas such as storage areas, closets, around water pipes, doors, window, and behind and under appliances/ equipment.

WAREHOUSES (NON-FOOD)

GENTROL IGR Concentrate may be applied as a general surface, fogging, spot, or crack and crevice treatment in non-food storage warehouses. Apply to all areas that may harbor pests, including under and between pallets.

FOOD HANDLING ESTABLISHMENT APPLICATIONS

GENTROL IGR Concentrate may be applied as a general surface, fogging, spot, or crack and crevice treatment in both food and nonfood areas of Food Handling Establishments. These establishments are defined as places other than private residences where exposed food is held, prepared, recessed or served. It also includes areas where food items are received, prepared, packaged and stored, as well as enclosed food processing systems (mills, dairies, etc).

**SURFACE SPRAY APPLICATION
(DO NOT APPLY DIRECTLY TO FOOD PRODUCTS)**

GENERAL AREA TREATMENTS

Prior to application, remove or cover all food items. Also cover all food contact surfaces (i.e. equipment, benches, shelves - areas where exposed food may be handled, held, prepared, processed or served). If left uncovered, these areas must be thoroughly cleaned by a method capable of removing chemical residues after treatment.

PARTIAL AREA TREATMENTS

GENTROL IGR Concentrate can be applied to partial areas of food handling establishments in cases of small or localized infestations. For partial area treatments, a perimeter of at least 6 feet must be established (6 feet in all directions from the treated area), where all food handling surfaces are either covered at the time of treatment, or thoroughly cleaned by a method effective in removing chemical residues after treatment.

SPOT AND CRACK AND CREVICE APPLICATIONS

Prior to application, remove or cover all food items in area to be treated. Do not apply directly to food or food-handling surfaces.

PANTRY/CABINETS, SMALL FOOD STORAGE AREAS

Apply as a surface spray, crack and crevice spray, or spot treatment to pantry and cupboard shelves or other areas where food is stored. Prior to spraying, remove all food containers and foodstuffs. Do not replace food containers or foodstuffs until spray has dried. Destroy any infested food packages to ensure proper control.

FOGGING (SPACE SPRAY/MIST) APPLICATION

Prior to application, remove or cover all food items. Also, cover all food contact surfaces (i.e.; equipment, benches, shelves, areas where exposed food may be handled, held, prepared, processed or served). If left uncovered, these areas must be thoroughly cleaned by a method capable of removing chemical residues after treatment.

WAREHOUSES (FOOD)

GENTROL IGR Concentrate may be applied as general surface, fogging, spot or crack and crevice treatment in warehouses where packaged food items are stored in such a way that direct contact with the foodstuff is not anticipated.

STORAGE AND DISPOSAL

Store in a cool area away from children. Do not reuse empty container. For container sizes \leq 1 gallon: Wrap container and put in trash collection. For container sizes $>$ 1 gallon: Do not contaminate water, food, or feed by storage or disposal,

PLASTIC CONTAINER DISPOSAL

Triple rinse (or equivalent). Then offer for recycling or reconditioning, or puncture and dispose of in a sanitary landfill, or incineration, or, if allowed by state and local authorities, burning. If burned, stay out of smoke.

GLASS CONTAINER DISPOSAL

Triple rinse (or equivalent). Then dispose of in a sanitary landfill or by other approved state and local procedures.

METAL CONTAINER DISPOSAL

Triple rinse (or equivalent). Then offer for recycling or reconditioning, or puncture and dispose of in a sanitary landfill, or by other procedures approved by state and local authorities.

Seller makes no warranty, express or implied, concerning the use of this product other than indicated on the label. Buyer assumes all risk of use and handling of this material when such use and handling are contrary to label instructions.

For Information call 1-800-248-7763

Always read the label before using the product.



SANDOZ

SANDOZ AGRO, INC.

1300 EAST TOUHY AVENUE, DES PLAINES, ILLINOIS 60018

GENTROL[®] and GENCOR[®] are registered trademarks of
Sandoz Ltd.
©1996 SANDOZ AGRO, INC.

March 1996
Des Plaines, IL